



EPAH

EU Energy Poverty Advisory Hub

João Pedro Gouveia

joao.gouveia@energypoverty.eu

22/03/2022





The EU Energy Poverty Advisory HUB



Energy Poverty Advisory Hub (EPAH)

The Energy Poverty Advisory Hub, the leading EU initiative run by the European Commission at the request of the European Parliament, is a collaborative network of stakeholders aiming to eradicate Energy Poverty and accelerate the just energy transition of European local governments.



Partners

Five partner organisations from across Europe with the ambition to embrace the multi-sector dimension of energy supported by seven antenna organizations.



Antenna Organisations



Foundation and Mission



Mission

To be the center of energy poverty experience and expertise in Europe



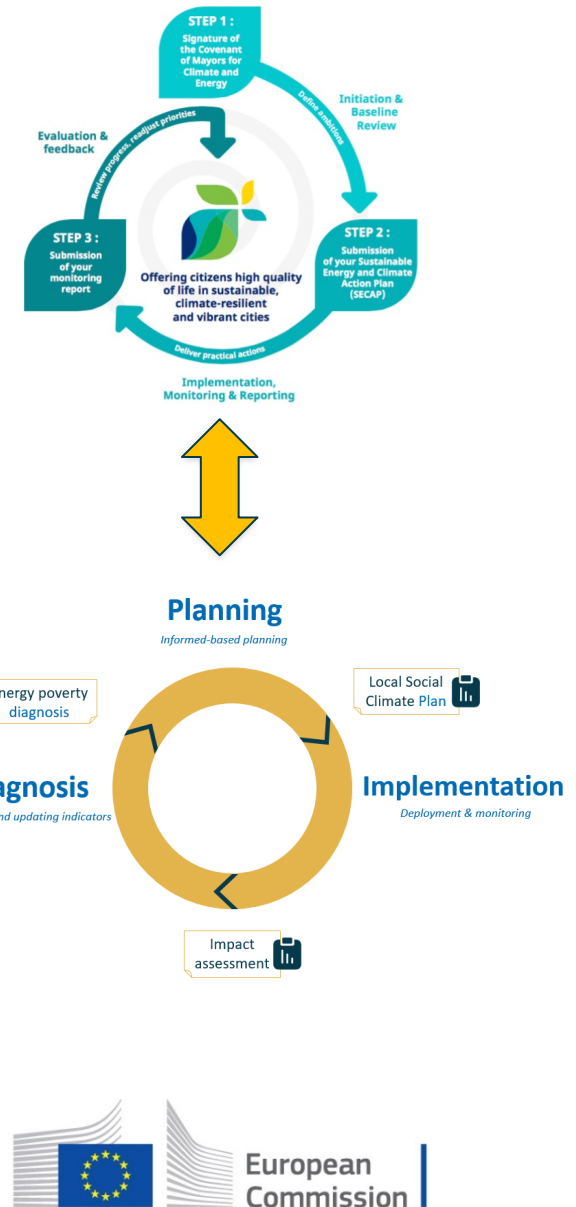
Approach

Providing **direct support**, **online training**, **research** to local authorities and civil society organisations & by building a **collaborative network of all stakeholders** interested in taking action to combat energy poverty in Europe.



Addressing Energy Poverty – Local Governments

- Creating synergies with all layers of governance
- Special focus on the Local Level
- **EPAH activities and deliverables** are an opportunity to be guided, either in the first step of ensuring the SECAP is just and fair, or with assessments of the impacts of already implemented activities in the SECAP related to energy poverty.
- **EPAH’s methodology** is design together with the Covenant of Mayors Office and is developed to easily merge into existing planning praxis with a minimum of efforts.





Local Solutions



Local solutions

The report

Tackling energy poverty through local actions – Inspiring cases from across Europe

The

EPAH ATLAS

The

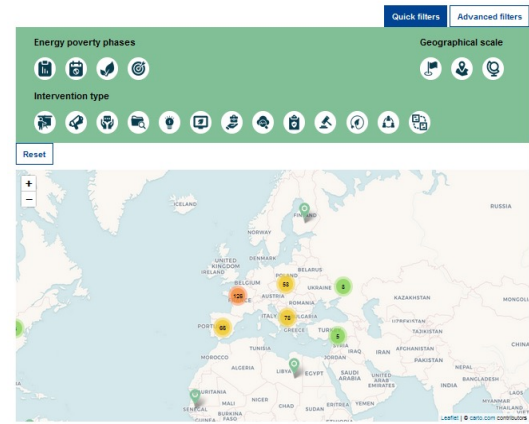
Introduction to energy poverty and the EPAH – Introductory course



EPAH ATLAS

The Energy Poverty Advisory Hub has collected more than 200 inspirational cases during a research period that took place in 2021. The EPAH ATLAS is an online interactive database that allows visitors to discover local and international projects as well as measures addressing energy poverty across the world. Visitors can explore the interactive map, view a list of all projects and read more information about any case. A list of quick and advanced filters allows visitors to browse through the cases in an easy and effective way.

Is your case, project or measure, not part of the EPAH ATLAS yet? Submit your work. Download the [submission template](#), fill in all the relevant information and send it to the EPAH helpdesk at: info@energypoverty.eu. Your case will be added to the EPAH ATLAS. If your project/measure is already part of the database but wish to submit changes, you can contact the EPAH helpdesk too.



Introduction to energy poverty and the EPAH – Introductory course

The "Introduction to energy poverty and the EPAH – Introductory course" is a short course open to all stakeholders interested in addressing energy poverty. It provides an overview of energy poverty from a practical-political perspective.

The course is open to all, and no prerequisites are needed.

The duration is approximately one hour and is made up of six lessons divided into three modules, which can be taken individually. Participants that complete all the modules will receive a course certificate.

The course is available in English with subtitles in 23 European languages.

Registration to the course is offered continuously. Every 1st and 15th of each month, the registrations will be checked and accepted. The user will receive an automatic notification (via email) with the indications to access the online platform.

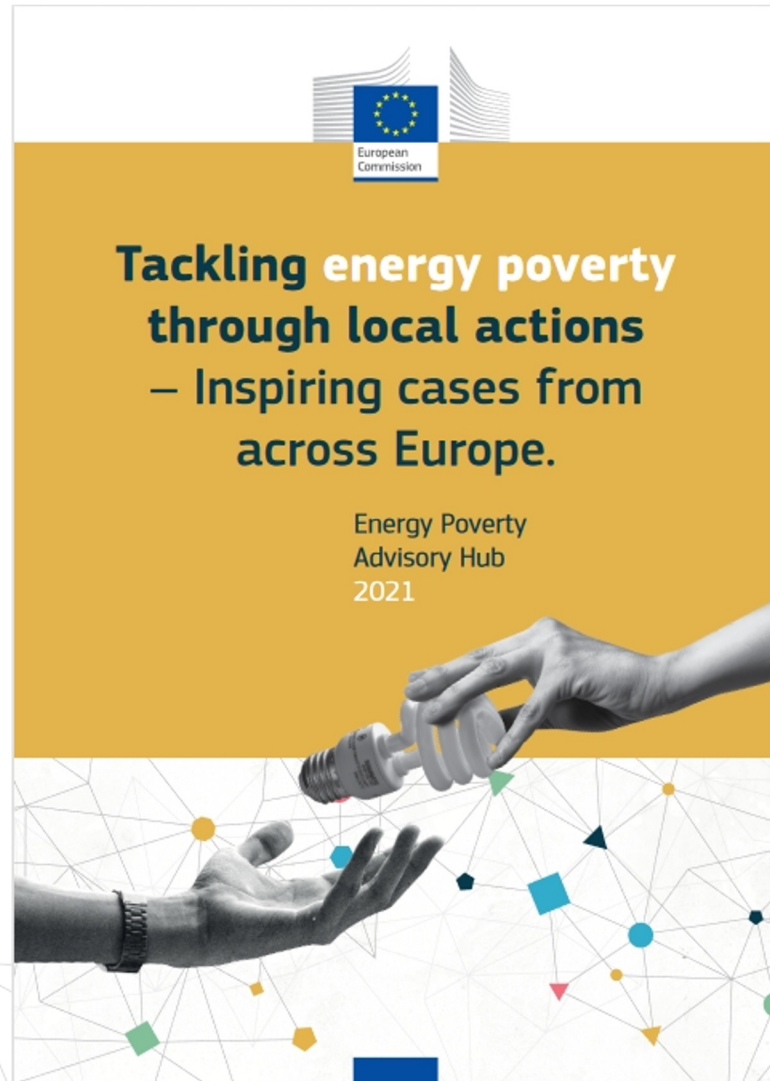
To follow the course, you need to create an account to the Energy Poverty Advisory Hub platform and sign up for the course.

- 👤 **Open to all**
- 📅 **Available now**
- 🕒 **Estimated effort:** 1 hour
- 🌐 **Alternative languages:**
 - Italian
 - Spanish

[Join the course](#)

www.energypoverty.eu

Tackling Energy Poverty Through local actions



Available on all 24 EU official languages



Local solutions

Green Doctors



Green Doctors are energy efficiency experts who visit residents in their homes across the UK, helping vulnerable households to save money on their energy bills, stay warm and improve their living conditions. With 1 in 10 households in the UK experiencing energy poverty, the service is a crucial lifeline for many residents.



Energy poverty phases:

- Planning
- Implementation

Intervention type: Capacity building and training, communication campaign, consumer advice, protection, and empowerment, household energy efficiency and refurbishment

Topics: Health, behaviour, heating and cooling systems, household appliances, indoor comfort, information and awareness, energy access and consumption, energy audits, energy efficiency, energy prices, social support



Cheshire, Barnsley, Kirklees, Sunderland, Stoke, Newcastle under Lyme, Staffordshire Moorlands, Blackpool, Burnley or Rochdale, Greater Manchester, London, Northeast Manchester, London, Northeast and Yorkshire, Leeds, Bradford District, United Kingdom

Geographical scale: Local

The service also helps reduce carbon emissions.

The service offers a set of free services when someone signs up for a Green Doctor consultation that aim to:

- Identify causes of heat loss in the home.
- Help identify and tackle damp or mould problems.
- Offer useful tips for saving energy and water whilst ensuring your home stays safe and comfortable.
- Install small energy and water efficiency measures, such as draft excluders.
- Facilitate switching energy providers to save money.
- Facilitate accessing support, such as emergency heating, government subsidies or grants, advice on energy or water debt.

Local authorities are part of the service partnership, and the initiative stands as an inspiring example of a long-term service that supports people in need with hands on solutions while taking into account the challenges of communities living in energy poverty.

Photos by Groundwork



Benefited from the project: Energy poor, low income



Funding: Private funds, national, regional, local funds by the 'Cadent Foundation Green Doctor'

Type of stakeholders: Municipalities, local authorities



The partners: Groundwork UK (charity), Cadent Foundation Green Doctor (charity), housing provider (public, social and cooperative), local authority



The professionals:

- Architect
- Social worker
- Technician



GREEN DOCTOR

- Capacity building and training
- Communication campaign
- Consumer advice, protection and empowerment
- Household energy efficiency and refurbishment

Local solutions

Dampoort renovates! (Dampoort KnapT OP!)



Dampoort renovates! targeted a group of people called “Noodkopers” (“captive owners”) who have purchased housing property because it was the cheaper option compared to renting. Their property was often poorly insulated and in bad condition. Ten houses were identified and the owner was offered the opportunity to apply for a €30,000 grant to make the property safer and more energy efficient. The grant has to be repaid if the owner decides to sell or rent out the property. The local authority facilitates the initiation, facilitation and screening process of the project.



The project delivers the following five activities:

- Development of a general framework. The criteria for potential beneficiaries were defined and families with low-income who lived in dwellings of substandard quality were eligible. To determine the families most in need, a scoring system including the Flemish Housing Code and a survey was developed. A framework for the renovation works as well as regulations and agreements were drafted.
- Recruitment and selection of candidates. Potential candidates were invited to apply for the project and were ultimately selected based on the previously defined selection criteria. Individual renovation plans were drafted and residents who were not selected gained access to further information programmes about housing premiums and other support measures.
- Tendering and preparation for the works. A public tender was published and quotes collected from potential contractors. Group meetings were organised in which the candidates received status updates and exchanged experiences. As a side-effect of the individual consultations and interviews with the candidates, problems beyond the scope of the project were discovered and tackled together with the project partners.
- Implementation of works. The renovation works were carried out and examined by the construction supervisor. If additional grants and/or premiums were applied for, Woonwinkel took care of the applications. Monthly



Energy poverty phases:

- Diagnosis
- Planning
- Impact assessment

Intervention type: Household energy efficiency and refurbishment

Topics: Heating and cooling systems, indoor comfort, insulation, energy access and consumption, energy efficiency, social support, financing schemes

meetings of residents allowed everyone to exchange experiences and provide updates on their progress. In order to help residents with their energy bills, tips on energy saving and suppliers were shared.

- Aftercare of renovation works. Renovations are sometimes difficult to plan and some demanded aftercare. Fixed contact points were established to give people the opportunity to get answers on housing, premiums or other questions.

This is an inspiring example of a project that needs relatively large initial investment but the rolling fund is self-sustainable in the long run, as the beneficiaries who sell their houses have to pay back the grant plus a share of the added value of the property.

With a budget range of 110,000 to 1 million euros, the project improved the average energy score of the dwellings by 275 kWh/m², from 519 kWh/m² to 244 kWh/m². As a result, each dwelling on average saved 6,442kg CO₂/year, and 95% of the health risks resulting from moisture, CO₂ exposure or electrocution and fire hazards were eliminated.



Benefited from the project: Energy poor, Low income



Funding: Local funds by the OCMW Gent (social welfare office Gent)



The professionals:

- Architect
- Engineer
- Member of a local/national authority
- Researcher
- Social worker
- Technician

The ICCARus project is based on this pilot project and serves the whole of Ghent. The project was scaled up to 100 dwellings.



Photos by Mathis Ketsels on Unsplash



The partners: Civil society organisation, Housing provider, Local authority, Private company, University/Research centre, Social welfare office, Chamber of commerce. Specifically: City of Gent, OCMW Gent, CLT Gent, Belfius, vzw SIVI, Samenlevingsopbouw Gent vzw, Dorium Mundi vzw, REGent vzw, Bouwanite, Technologiecampus Gent van KULeuven

Type of stakeholders: Private companies

- Household energy efficiency and refurbishment
- Heating and cooling systems
- Indoor comfort
- Energy access
- Financing schemes
- Social support

EPAH ATLAS - Structure

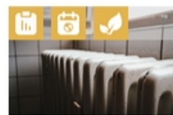
Quick filters Advanced filters

Energy poverty phases

Geographical scale

Intervention type

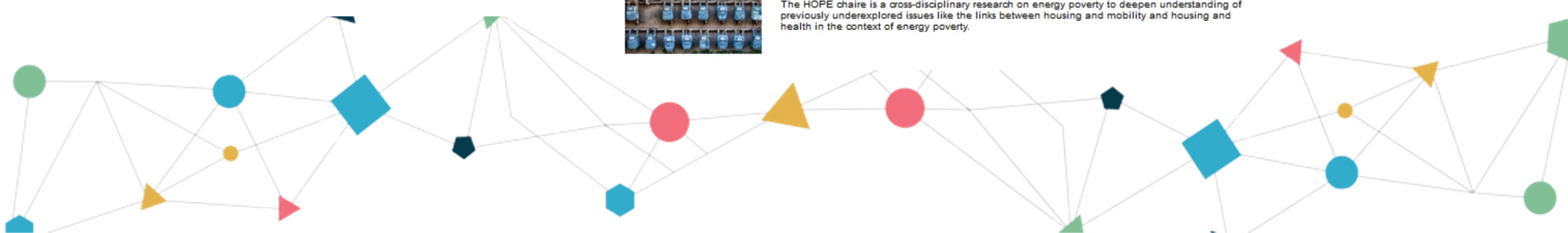
Reset



AIC - AbriGá tu Casa
Argentina
 The project aims to turn weatherization into a public housing improvement policy in the city.



HOPE HOPE Chair of Excellence - Eradicating energy poverty
France
 The HOPE chaire is a cross-disciplinary research on energy poverty to deepen understanding of previously underexplored issues like the links between housing and mobility and housing and health in the context of energy poverty.



EPAH ATLAS - Detailed Description

EnPower - Municipalities Municipal low-cost energy efficiency measures to alleviate energy poverty

The EnPower project aims to support municipal actors to fight energy poverty on their territories and equip them with a set of universal and ready-to-use tools boosting implementation of low-cost energy efficiency measures in households most prone to energy poverty. Also, a network of municipal professionals exchanging relevant ideas and good practices was created and a series of inspiring workshops and exchanges organised. And last, but not least, the project envisaged designing and implementation of model awareness raising campaigns that may inspire other cities to follow.

The project is a good example of highlighting municipalities role in tackling energy poverty; raising their awareness of the topic and providing them with a collection of different tools to be used locally to support energy poor and vulnerable consumers. It was implemented in 9 pilot municipalities, who built their capacities and exchanged on how to tackle energy poverty on the local level. They also launched pilot awareness raising campaigns targeting energy poor and vulnerable.

With a budget between 100 000 and 1M€ the EnPower project contributed its share to tackling energy poverty in Europe through the following activities:

- establishing a network of municipal professionals interested in advancing the topic in their municipalities;
- mapping and consulting relevant stakeholders, i.e. public authorities and organisations working with vulnerable households to seek their expertise and advice;
- collecting best practice examples of successful initiatives supporting energy poor households to reduce their energy consumption and improve comfort of living;
- organising workshops with experts from municipalities, tenants, private homeowners, consumer protection, social welfare and energy consultation organisations;
- organising study visits to see in reality examples of best practices on tackling energy poverty;
- developing a toolkit of customized and ready-to-use support schemes boosting implementation of low-cost energy efficiency measures in private households;
- launching model awareness raising campaigns addressed at private households, especially those most vulnerable to energy poverty;
- wide dissemination of project results and products.

Useful links: [EnPower](#)


The project started in 10/01/2019-06/30/2021


It benefited: national/local authorities


It addressed the topics of: air quality; health; behaviour; heating and cooling system; household appliances; indoor comfort (thermal comfort, housing quality); information and awareness; energy access and consumption; energy efficiency; vulnerable consumers (disabled, students, tenants, public housing inhabitants)


Some concrete key performance indicators (KPIs) of the project include: Total number of municipalities directly involved in capacity development: 9 municipalities Number of direct physical interactions between participating municipalities (via workshops and site visits): 6 Physical (or on-line) interaction Positive feedback on the usefulness of toolkit on low-cost energy efficiency measures for vulnerable households by staff of participating municipalities: 9 Feedback through questionnaire Number of municipal energy awareness raising campaigns: 5 Local campaign N/A





 Jasko, Szum, Zamość, Poland; Nuremberg, Munich, Germany; Szentendre, Miskolc, Bukkabarany, Toboldaroc, Hungary

 Geographical scale: Regional

 Energy poverty phase: Diagnosis, Planning, Implementation, Impact assessment

 Intervention type: Capacity building and training, Communication campaign, Consumer Advice, protection and empowerment, Household energy efficiency and refurbishment, Stakeholders' Engagement

 Professionals involved: Engineer

 Type of funding: National funds from the European Climate Initiative (contract number: 81247746) of the German Federal Ministry of the Environment, Nature Conservation and Nuclear Safety (BMU).

SDGs addressed:



FEMENMAD Feminisation of energy poverty in Madrid. Exposure to thermal extremes.

FEMENMAD project arises in the light of the results from the technical study on energy poverty in the city of Madrid, which discloses 23% of households at risk of energy poverty and pointed out households headed by women among most disadvantaged groups. As the official information available for analysing energy poverty is not disaggregated by sex 16 mix or semi-structured interviews were carried out. These 16 households' indoor thermal conditions were monitored as well. Interviews were accomplished with women who live in households suffering from energy poverty. The interviews were designed along with the social entities that provided the sample of households. All interviews were conducted at participants' residences, directly to women (or helped by relatives due to language).

They all allowed the installation of thermometers in the living room and in the main bedroom to record indoor temperature and relative humidity for a year. Moreover, in this project exposure to thermal extremes has been explored. The risk of suffering from summer energy poverty is firstly explored according to the gender of the main breadwinner within each household. The geospatial distribution of their vulnerability, as a function of income, is compared with other indicators related with their exposure to high temperatures: the housing energy efficiency and the UHI intensity. Then, an evaluation at the sub-municipal scale is carried out among the different subgroups in which a woman is the main breadwinner. The analysis of the selected variables was conducted using a hot spot analysis based in the Getis-Ord statistic (G^{*}_i), which evaluates the autocorrelation of each variable according to its spatial distribution. The project includes an analysis of the causes of morbidity and mortality by age and sex in the city of Madrid from cold spells or heat waves demonstrating that women are more vulnerable group to the impacts of thermal extremes on their health.

With a budget between 10 000 and 100 000€ the activities developed include:

1. Analysis of the feminisation of energy poverty at the local level in the city of Madrid through the income and expenditure approach.
2. Analysis of the feminisation of energy poverty at the Regional level in Madrid through the income and expenditure approach.
3. Qualitative analysis through interviews and monitoring indoor temperatures.
4. Analysis of feminisation of energy poverty through the living conditions approach.
5. Study of impact of thermal extremes in health.
6. Recommendations for improvement in the public policies of Madrid in the area of housing and health.
7. Workshops for understand the energy bills.

The project started in 2019 and lasted until 2020. It benefited the disabled, elderly, energy-poor, gender-oriented, low income and policymakers. It addressed the topics of hard to treat homes, area-based targeting, health, behaviour, heating and cooling system, household appliances, human rights, communities, income, indoor comfort (thermal comfort, housing quality), cultural factors, information and awareness, debts, distributional effects, economic crisis, quality of dwelling, employment, energy access and consumption, safety (fire, electricity, fuel), energy prices, equipments, equity and justice (gender equality, socio-economic gaps), extreme weather conditions, vulnerable consumers (disabled, students, tenants, public housing inhabitants), gender.

Useful links:

[Final report \(english and spanish\)](#)

[Workshop presentation.](#)

[Final report presentation](#)

[Short presentation.](#)

[Environmental pollution.](#)


[Energy & Buildings.](#)




 Madrid, Spain

 Geographical scale: Regional

 Energy poverty phase: Diagnosis, Implementation

 Intervention type: Characterisation, Consumer Advice, protection and empowerment, Data collection, Monitoring and Impact Assessment, Stakeholders' Engagement

 Professionals involved: Engineer, Member of a local/national authority, Researcher, Technician

 Type of funding: Local funds from the Madrid City Council under the call "2018 Grants to carry out research projects on global citizenship and international cooperation for Development"

SDGs addressed:



European Commission



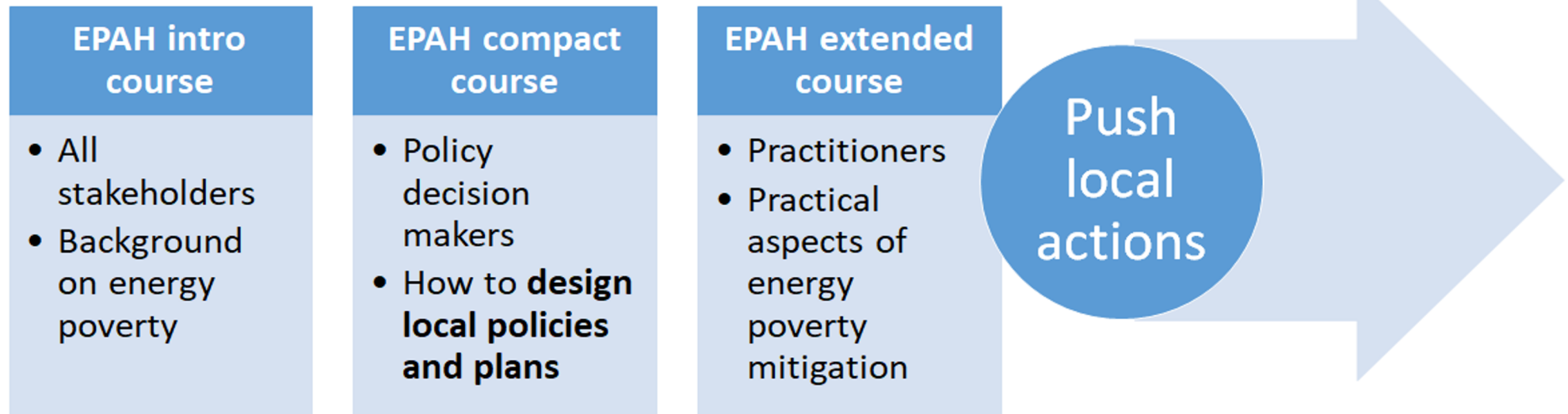
Training and Capacity Building



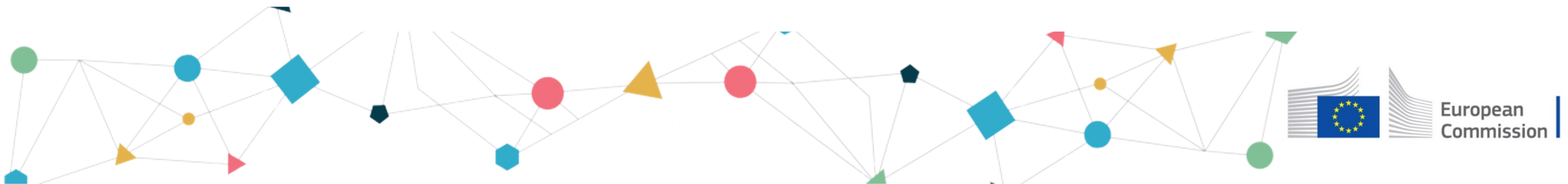
Online training courses

Intro Course – Already Available on all 24 EU official languages

3 **ONLINE** training courses will be issued during EPAH:



<https://elearning.energy-poverty.eu>



Energy Poverty Advisory Hub

Home Discover **Support** ^ Energy Poverty Observatory Covenant of Mayors About v

Home > Support > EPAH on

Call for technical
assistance

EPAH online courses

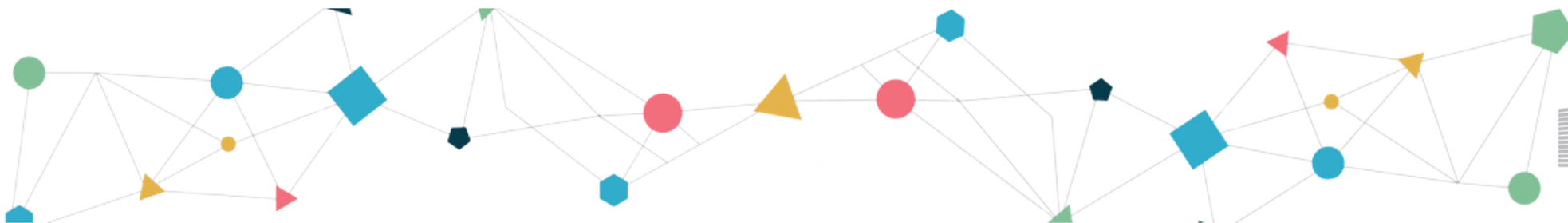
Trainings catalogue

Helpdesk

The first online course is launched

Introduction to energy poverty and the EPAH

Introductory course



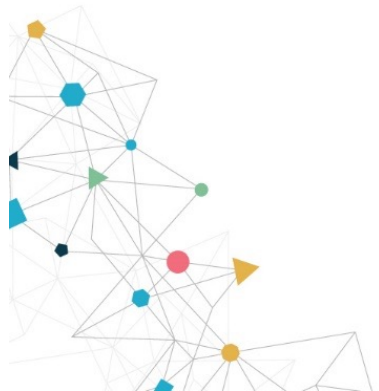


Technical Assistance



Technical Assistance

Tailor-made solutions



Technical Assistance

Trio Support

Local Governments
formulate
their specific need



EPAH team
supports in the
connection with a wider
network and with the
European level

Expert Organisation
Give specific support to
address the local context



Technical Assistance

WHO

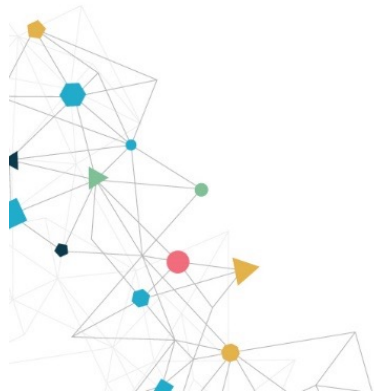
Local governments and/or organisations from all the 27 EU Member States that want to start and/or proceed in their process to tackle energy poverty.

GOAL

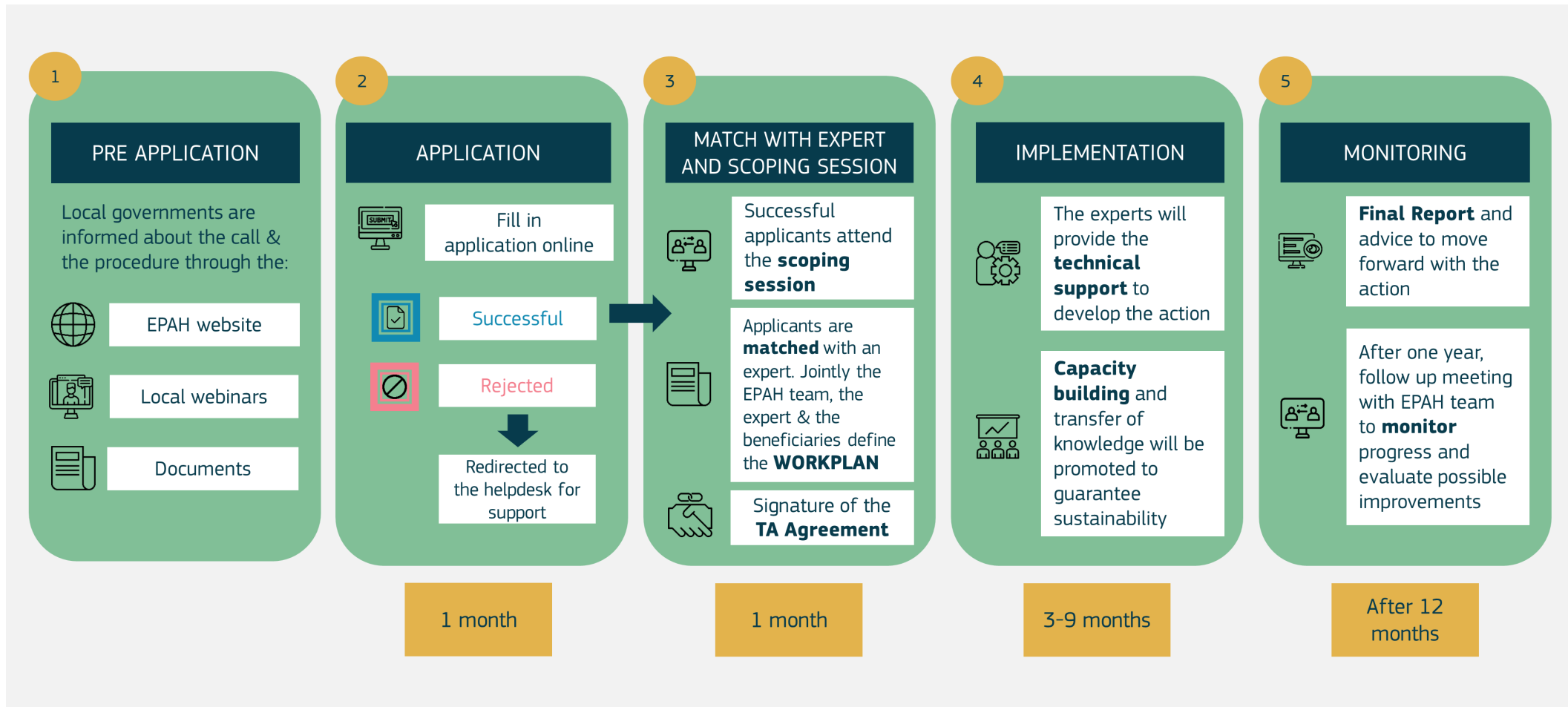
To produce **effective local results**

AWARD

up to 9 months of tailored support by experts and the EPAH team



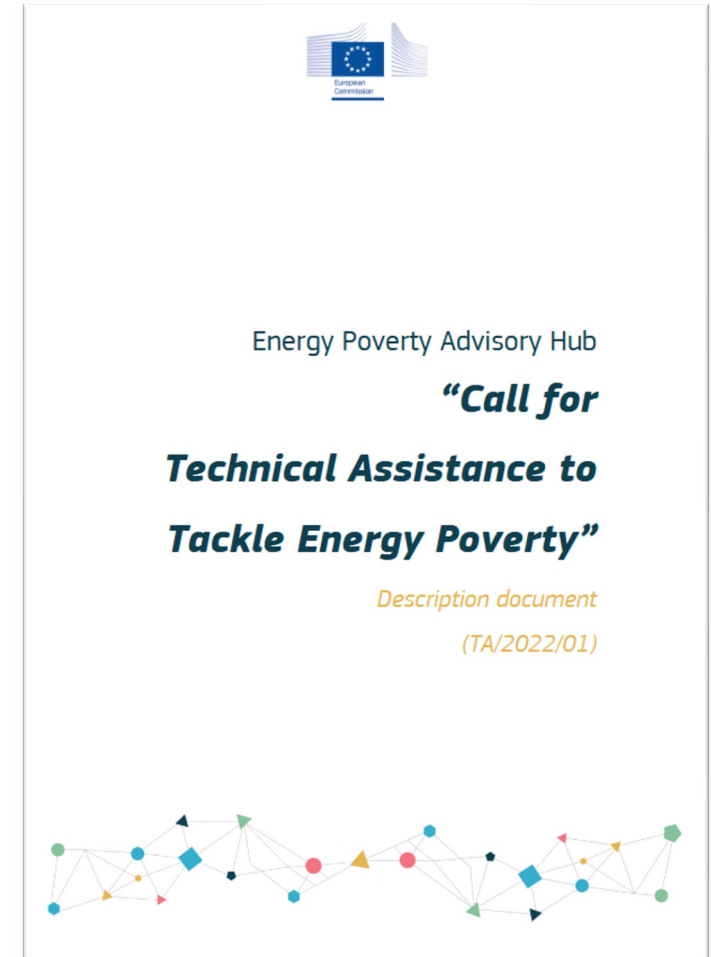
Technical assistance process



“EPAH Call for Technical Assistance Detailed Description” document

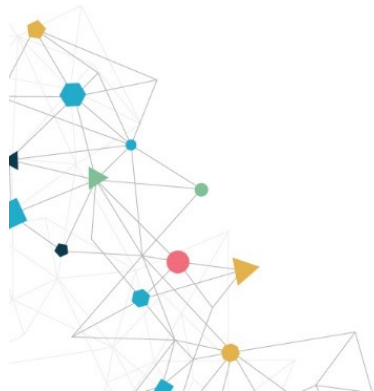
Available: call.energypoverty.eu/

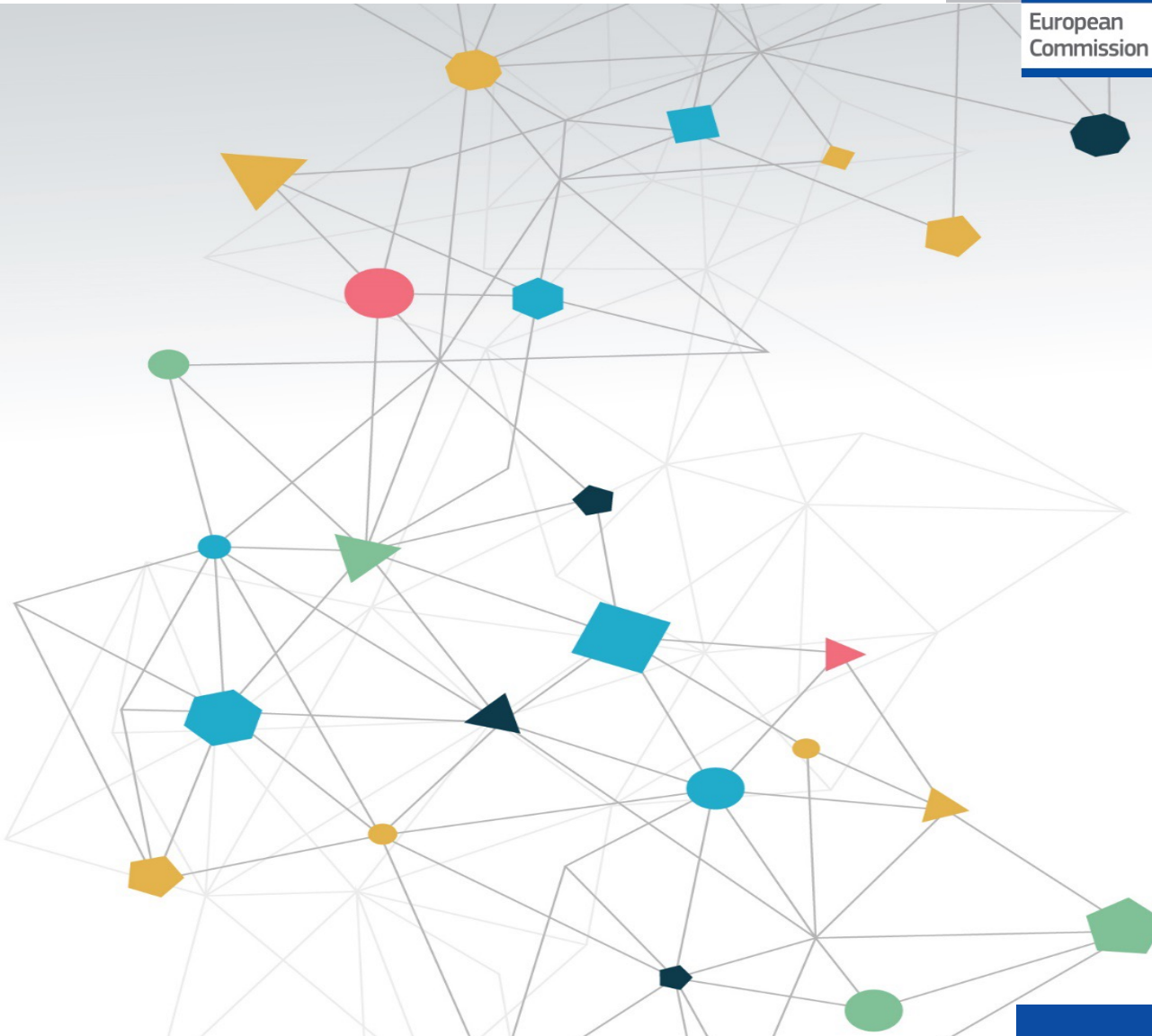
Closed 15th MARCH !!



Ongoing Work

- External Evaluation and Selection of best proposals for technical assistance.
- Up to 9 months of technical assistance support.
- Work on National indicators. Update and Review.
- Online Courses development.
- Continued interchanges with CoM.





João Pedro Gouveia

@joaopgouveia

joao.gouveia@energypoverty.eu

22/03/2022

