

Energy poverty and ASSERT project

Marina varvesi

Research & Innovation Area Manager

AISFOR

Italy



AISFOR S.r.l.

Innovazione, Sviluppo e Formazione

in classe A

Sede operativa

Via di Villa Severini, 54
00191 Roma

@AISFORsrl

Sede formativa

Via di Santo Stefano 11
0061 Anguillara Sabazia (RM)

/AISFORsrl

Telefono:

Roma 06 39.37.53.96
Anguillara 06 99.68.896

AISFOR info

www.aisfor.it

Info@aisfor.it
C.F. e P.IVA 08300981001

AISFOR Srl





INNOVAZIONE, SVILUPPO E FORMAZIONE
in classe A

AISFOR
KNOWLEDGE AND
CAPACITY BUILDING

*AISFOR al servizio per la crescita di
conoscenza e capacità*

AISFOR



Borne in 2005 it is a knowledge and
capacity buidling company specialised on
the human factor



**Knowledge and capacity
building**

Green topics

**Domestic and social
dimension**





ASSERT PROJECT

Large-scale multiactor training and mentorship programme to ASSist people with physical impairments in energy povERTy

Project acronym: LIFE23-CET-ASSERT

Granting Authority: European Climate, Infrastructure and Environment Executive Agency (CINEA)

Duration: October 2024 -September 2027

Website:
<https://assertacademy.eu>



Co-funded by
the European Union

Funded by the European Union. Views and opinions expressed are however those of the author(s) only and do not necessarily reflect those of the European Union or the European Climate, Infrastructure and Environment Executive Agency (CINEA). Neither the European Union nor CINEA can be held responsible for them.



Project consortium

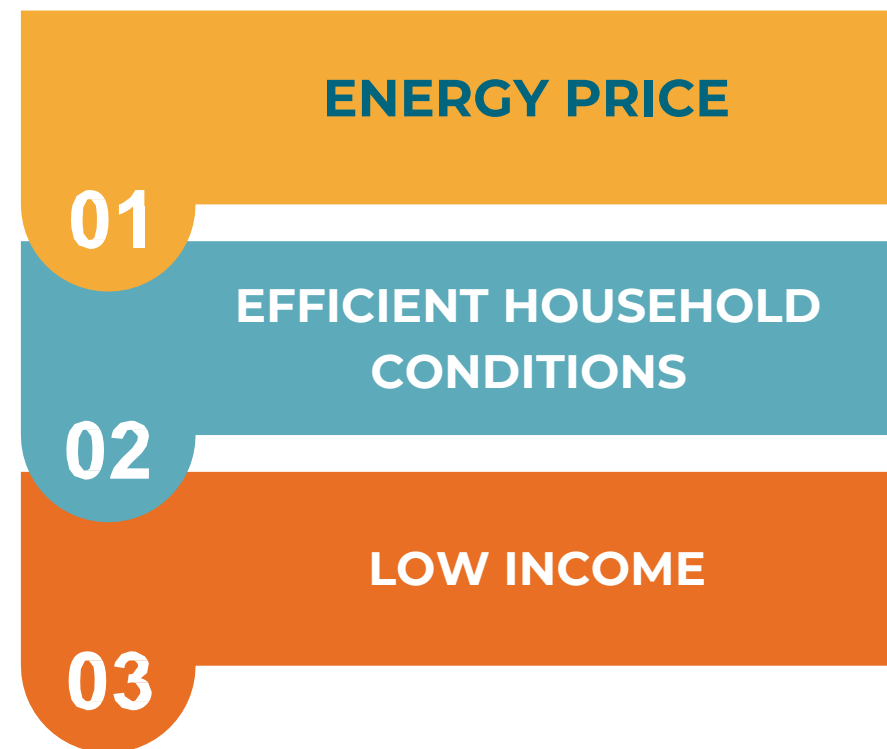
The ASSERT consortium consists of collaborating partners from **Italy, France, Spain, Greece, Cyprus, Germany, Belgium, and the Netherlands**. The partners are experts in the fields of renewable energy research, policy development, and community involvement, collectively striving to enhance sustainable energy initiatives.



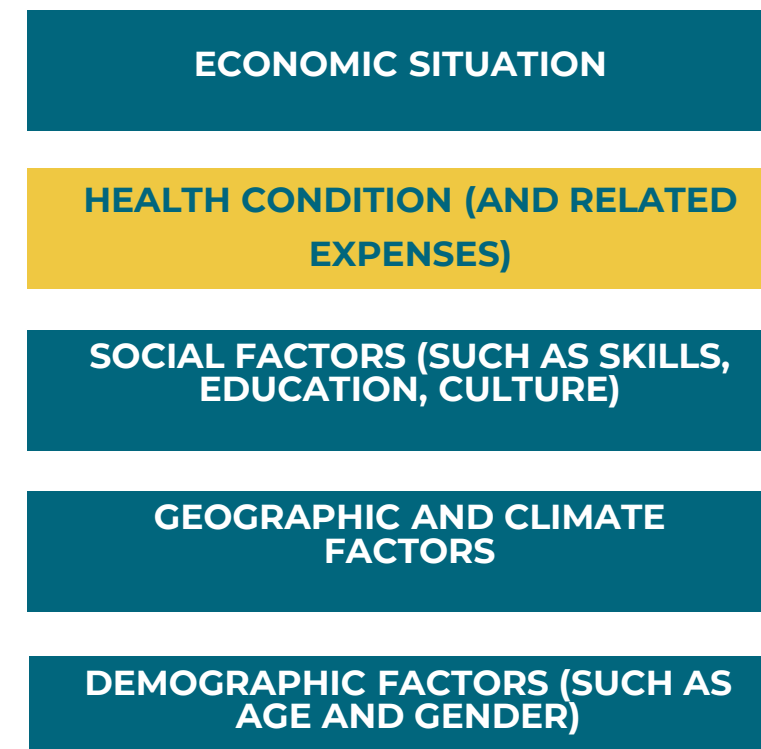
Looking into energy poverty from a new perspective



3 MAIN CAUSES OF ENERGY POVERTY



OTHER FACTORS INFLUENCING THE LEVEL OF ENERGY POVERTY



Some **social groups** are **more prone or at risk** of being / falling into energy poverty.



OTHER FACTORS INFLUENCING THE LEVEL OF ENERGY POVERTY

ECONOMIC SITUATION

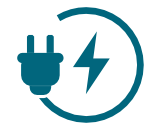
HEALTH CONDITION (AND RELATED EXPENSES)

SOCIAL FACTORS (SUCH AS SKILLS, EDUCATION, CULTURE)

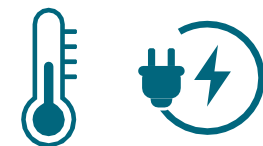
GEOGRAPHIC AND CLIMATE FACTORS

DEMOGRAPHIC FACTORS (SUCH AS AGE AND GENDER)

Health condition (and related expenses)



People with **health disabilities and / or with critical dependence on electric equipment** on electrical equipment for health reasons.



Disabled people have higher energy needs: **higher / lower room temperature** in the winter / summer; use of electrical equipment.



Disabled people have **energy needs for a longer time**: they travel less and spend more time at home.



24% of persons with disabilities are at risk experiencing energy poverty.



ASSERT – nexus between energy poverty and physical disability



Energy poverty condition
exacerbates their health conditions



Physical disability
exacerbates their energy situation being in energy poverty



Addressing the needs of disabled people can interrupt the vicious circle of aggravating health conditions as a consequence of unhealthy household conditions to energy poverty and vice versa. ASSERT will address the need of developing tailored activities and measures that target households that are concurrently disabled and energy poor.

Website:

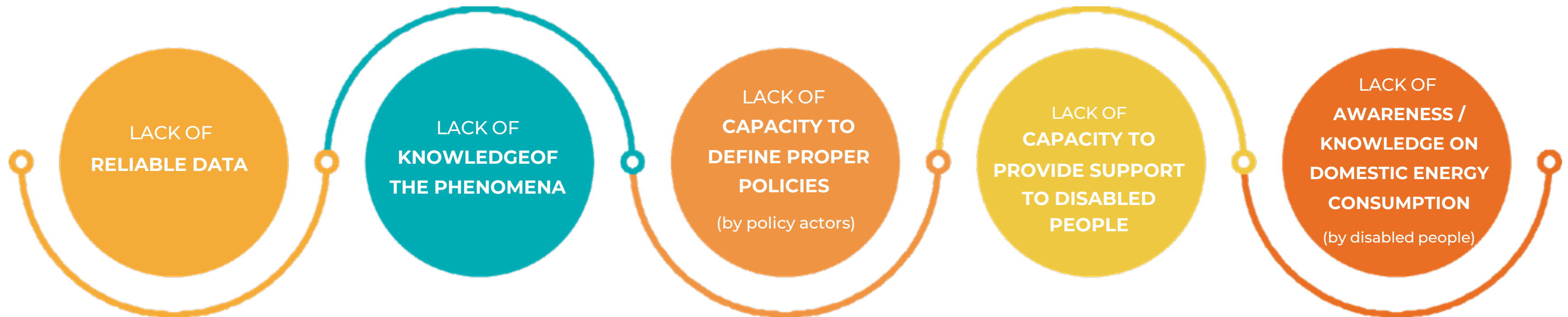
<https://assertacademy.eu>



Co-funded by
the European Union



What are the problems?





ASSERT mission – target - objectives



MISSION



ASSERT is dedicated to equipping **policymakers, intermediaries, and affected persons** with essential knowledge and skills to effectively address and mitigate energy poverty through targeted educational initiatives on energy efficiency and renewable energy solutions.

MULTI-TARGET



SPECIFIC OBJECTIVES

Training course on energy poverty and the nexus with physical disability to take these aspects into account when designing social / energy / health / housing policies

Training course on energy poverty and the nexus with physical disability to enable them to provide advice and assistance to disabled people facing energy poverty

Informal training and informative material on household energy consumption, small energy efficient measures and installation of small PV panels for domestic use

[Website:](https://assertacademy.eu)

<https://assertacademy.eu>



Co-funded by
the European Union





ASSERT activities



Scientific Research

- Analysis of **domestic energy needs of disabled people**
- Analysis of energy poverty **indicators**
- Analysis of domestic **comfort level** for this target
- Analysis of **existing policies and financial support** to alleviate the 2 dimensions

Practical socio- policy context research

- Analysis of existing **training** on energy poverty / physical disability / nexus between the 2 dimensions
- Analysis of **knowledge** on the topics and integration in local policies

Call for the Mentorship programme

- **Launch of an open call** addressing municipality – associations to support them in their relative work addressing energy poverty and the nexus with physical disability

Website:

<https://assertacademy.eu>



Co-funded by
the European Union





ASSERT activities



Mentorship and results

- **Work closely (mentor)
5 pairs of
«MUNICIPALITY –
INTERMEDIARY» per
country**

Roll out of target specific training

- Launch a wide multi-actor and multi-language training programme
- Support all 3 target groups to better address energy poverty and the nexus with physical disability

Policy recommendation s

- Deliver policy recommendations to municipalities

Website:

<https://assertacademy.eu>



Co-funded by
the European Union





Outcomes of the mentorship programme



Training course for local municipalities

Accessible online



Training course for associations

Accessible online

Informative material for disabled people

Easy to read and accessible resources



5

pairs of municipality-association undertaking the programme

25

trained intermediaries per pilot

25

trained municipal staff in each country

500

energy poor consumers with disabilities assisted per pilot

Website:

<https://assertacademy.eu>



Co-funded by
the European Union



Thank You.

Website



Linkedin



[Website:](https://assertacademy.eu)
<https://assertacademy.eu>

