



Co-funded by
the Intelligent Energy Europe Programme
of the European Union



CONCERTED ACTION
ENERGY EFFICIENCY
DIRECTIVE

Smart Grid data sharing platform Estfeed

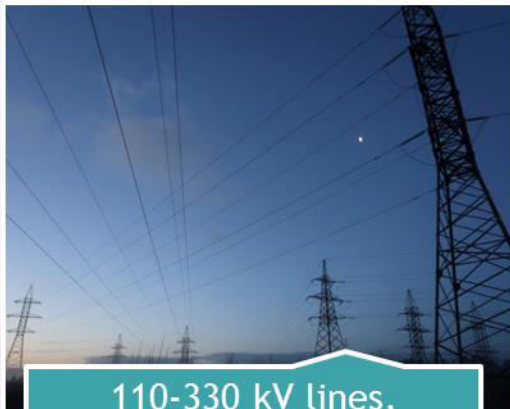
Kalle Kukk

Strategy manager

Elering

17 March 2016

Elering at a glance



110-330 kV lines,
connections with Finland,
Latvia and Russia



Natural gas
transmission network



Emergency reserve
power plants
and ca 150 substations



Eurobond listed on
London Stock Exchange,
Moody's A2/stable



230 employees



Asset value
ca MEUR 800

Milestones of unbundled Elering



- 27.01.2010 – full ownership unbundling
- 1.04.2010 – launch of NPS in Estonia
- 1.08.2012 – purchase of shareholding in NPS
- 25.08.2012 – launch of Data Hub
- 1.01.2013 – full opening of electricity market
- 6.12.2013 – Est-Fin cable Estlink2 is commercially operational
- 30.12.2013 – acquisition of Est-Fin cable Estlink1
- 21.06.2014 – finalization of construction of emergency reserve power plant
- 2.01.2015 – purchase of majority shares in Estonian gas TSO
- 2016 – launch of smart grid platform Estfeed

EC Communication: Delivering a New Deal for Energy Consumers



*„An important part of value in the future energy market will stem from **large data flows** and the **wider integration of information and communication technology into energy systems**. Therefore, the data collection and processing party in the context of smart metering systems or other services empowering consumers to act should provide **direct access to these data** to the customer and any third party designated by the consumer. /.../ While data handling can follow different models, the **neutrality** of the entities managing data access is of the utmost importance.“*

WELCOME TO THE ESTONIAN DATA HUB!

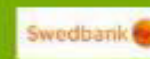
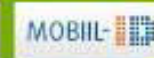
Estonian data hub named Andmeladu is a system that holds all agreements related to electricity transfer and consumption and all measurement data.

Electricity consumers can:

- Look at their electricity consumption points and their agreements
- View historical electricity consumption data
- Authorize one or more electricity sellers to access your data, so they can make personalized offers



Please log-in:



After logging in it is possible to define yourself as a private person or legal entity.

[Frequently asked questions](#)

Technical support:
help.andmeladu@elering.ee

Estonian data hub information
phone:

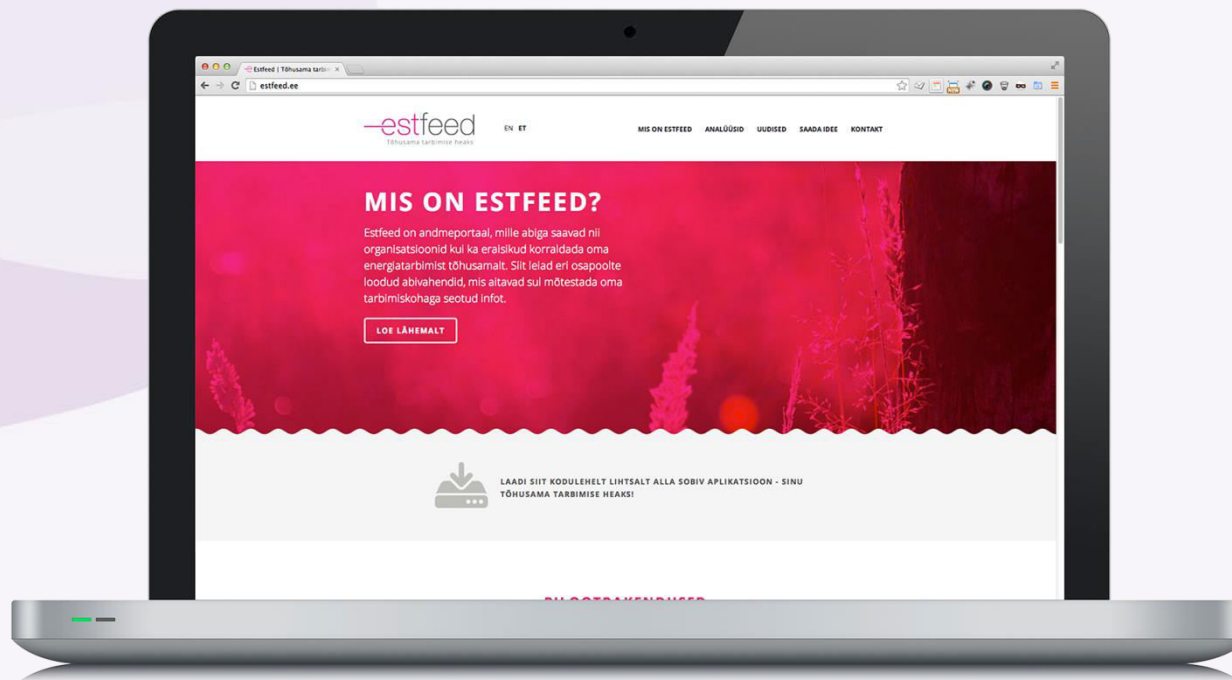
 (+372) 6 160 160

[AVP API documentation](#)

created by



CONCERTED ACTION
ENERGY EFFICIENCY
DIRECTIVE



<http://estfeed.ee/en/>

<https://vimeo.com/148612278>

Estfeed – energy data sharing platform



- Estfeed is a **data sharing platform** that allows network companies, energy producers and consumers to interact more efficiently and make the data collected during energy consumption understandable and usable for end users.
- The objective of the Estfeed project is to **create a smart grid** that allows market players to get energy consumption information securely and transparently, understand the needs related to the metering point and change their behavior accordingly.
- The Estfeed platform and applications turn the **data into valuable information** for consumers, energy producers, network companies and other participants in the energy market.

Data + Platform + Applications = Smart energy efficiency

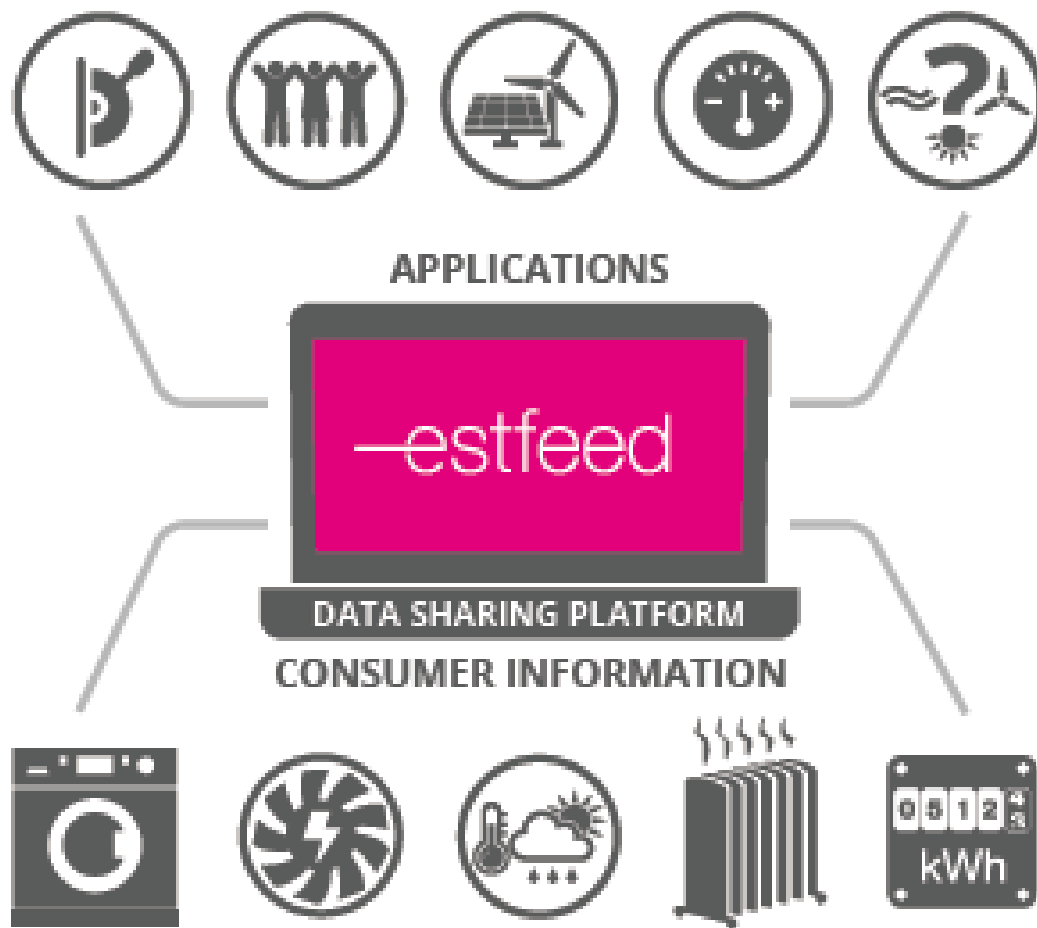


- Estfeed brings together data sources and applications. **Data sources** range from electricity, gas and district heating smart meter readings to weather forecast and energy day-ahead prices. It also can be consumption information from individual devices in industry, offices, households.
- Estfeed is a portal that gives developers a chance to access this information flow. By interpreting and combining data they can create useful **applications** for themselves or their customers (end consumers). The aim of the applications is to **create efficiency**, either for cost optimization or for end consumers.

Estfeed – security, economics, neutrality



- Estfeed is integrated part of Estonian public information exchange platform called X-Road. This means highest **security** standards. X-Road enables access to all kind of public data sources which may be of relevance for the developers of Estfeed applications. Central platform also means better **economics** for the society.
- Estonian electricity and gas transmission system operator (TSO) Elering as **neutral party** is well placed to provide data sharing service to public in reliable and independent way. Growing importance of information and communication technologies is becoming central in running energy system. It translates TSO role to something new: Elering is the **Smart Energy System Operator** and Estfeed is the tool for realizing smart grid.



Pilot Applications



CONCERTED ACTION
ENERGY EFFICIENCY
DIRECTIVE



„Right Ampere“

<https://vimeo.com/148612277>

<https://vimeo.com/159175964>



„Virtual Power Plant“

<https://vimeo.com/148612279>



„Aggregator“

<https://vimeo.com/148612282>



„Heat Monitor“

<https://vimeo.com/148612281>

<https://vimeo.com/159175963>



„My Energy“

<https://vimeo.com/148612280>

Thank you for your attention



CONCERTED ACTION
ENERGY EFFICIENCY
DIRECTIVE

Kalle Kukk

Strategy manager

Elering

Kadaka tee 42

12915 Tallinn

Estonia

Tel: +372 5084940

Web: www.elering.ee/en

Email: kalle.kukk@elering.ee

